



सत्यमेव जयते

पेयजल एवं स्वच्छता विभाग  
जल शक्ति मंत्रालय  
DEPARTMENT OF DRINKING WATER AND SANITATION  
MINISTRY OF JAL SHAKTI



# Jal Jeevan Mission

## India's flagship programme for 'Tap-water to every rural household'

### Progress of Mission

Tap water coverage increased from 32.3 million (16.74%) to more than **152.96 million (79.07%)** households.

**931 thousand (89.22%)** schools, **969 thousand (85.13%)** anganwadi (day-care) centres and **393 thousand (77.23%)** public institutions benefited.

Tap water coverage increased from **2.14 million (8%)** to **21.44 million (78.11%)** in 112 Aspirational Districts

### Water Quality

More than **2.47 million women** trained to use Field Test Kits to check the quality of water supplied at source/ at home.

In FY 2024-25 (as on date) over **11.91 million** tests have been conducted using labs or FTKs.

**2,160 water testing laboratories** are open for public to test water samples at nominal rates.

### Impact

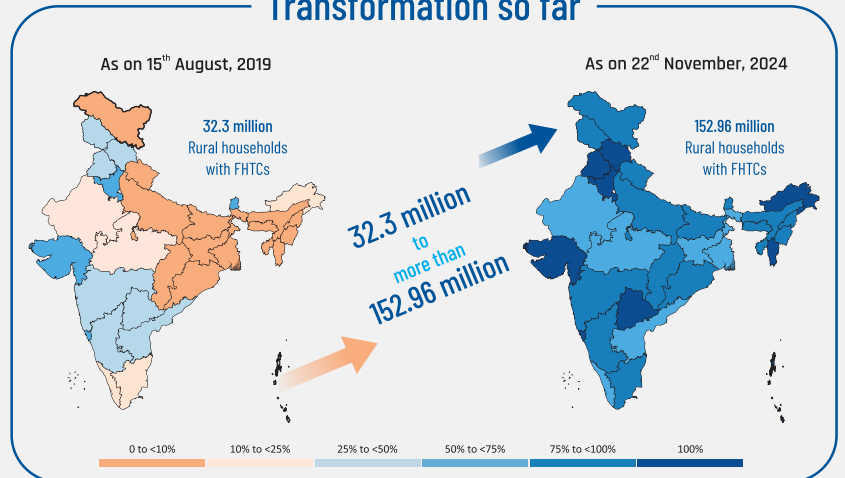
JJM has potential of **28 million Employment Generation** during implementation phase

**136 thousand Child Death** (under 5 years) can be prevented after universal tap water coverage

**55 million hours saved daily** from fetching water (75% saving for women)

**400 thousand Diarrheal Deaths** can be averted with safe drinking water supply at home

### Transformation so far



### Leveraging technologies for transparency & accountability



JJM Dashboard - JJM related data in public domain



Periodic functionality assessment of tap connections



Online Water Quality Management Information System



Sensor-based IoT devices to monitor water supply systems



Water supply infrastructures are geo-tagged



Dedicated portal "Citizen Corner" to know your water quality



Transparent Accounting system



JJM Website



JJM Documents



JJM Videos



JJM Dashboard



Social Media Handles



IEC Materials



Jal Jeevan Mission, India



@jaljeevan\_



Jal Jeevan Mission



@jaljeevanmission



jjm.gov.in



Jal Jeevan Mission